

HOW TO CONCEAL BLINDS

SKYLIGHTS

Solutions to conceal blinds

Blindspace is the leading provider of solutions to conceal blinds. Our standard, modular and custom products are designed to conceal any type of blind, in any type of window or skylight.

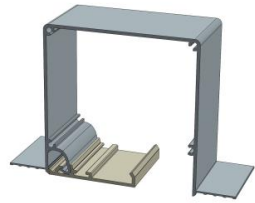
We work closely with architects, designers and blind specialists, continuously developing products and services to help them staying ahead.

Our mission is to provide more people with beautiful, bright and energy-efficient places in which to live, work, and play.

Blindspace® is a registered trademark of Blindspace AB. Key features, including the Blindspace® hinge cover, have patents pending in the UK and elsewhere.



The Blindspace® Concealment System



Series

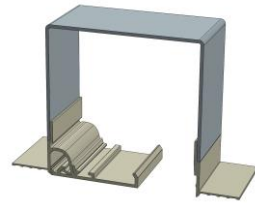
BLINDSPACE S STANDARD

Description

Extruded boxes and covers in standard sizes with holes for end caps and alignment of multiple boxes.

Benefits

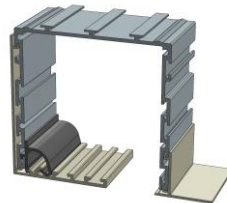
- Standard sizes
- Cost efficient
- Quick delivery



BLINDSPACE C CUSTOM

Custom made boxes that are made to any size to house blinds, guide wires and side channels.

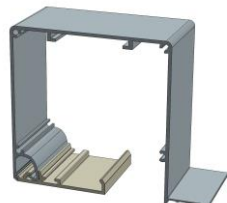
- Any box shape and size
- Side boxes for blackout, flyscreen or tensioned blinds
- **Suitable for skylight blinds**, gable blinds, double blinds,



BLINDSPACE M MODULAR SYSTEM

Versatile modular system with multiple configurations and accessories including LED in-box lighting.

- Flexibility in configurations
- Side boxes for blackout, flyscreen or tensioned blinds
- Add-ons such as LED



BLINDSPACE E BESPOKE EXTRUSION

Bespoke extrusions of boxes and covers in any size and design for larger projects.

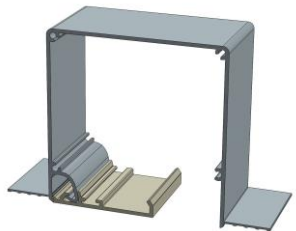
- Flexibility in design
- Allows for add-ons
- Cost efficient

Naming of products and flange configurations

The regular flange configuration for Blindspace® boxes is to have skim coat flanges on both sides, for quick installation and seamless appearance after painting.

Blindspace® boxes are also provided with flanges on only one side or sometimes with no flanges. It is important when installing boxes without flanges that both sides of the box are still anchored firmly.

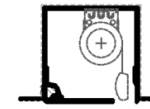
Blindspace product names consist of reference to product series, size of the box, and the flange configuration.



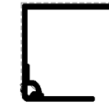
Product series — Flange location

Blindspace **S100x100R**

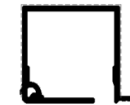
Box front size (mm) — Box depth (mm)



R - Regular



N - No Flange



I - Idle Corner Flange



H - Hinge Corner Flange

Designing for Blindspace

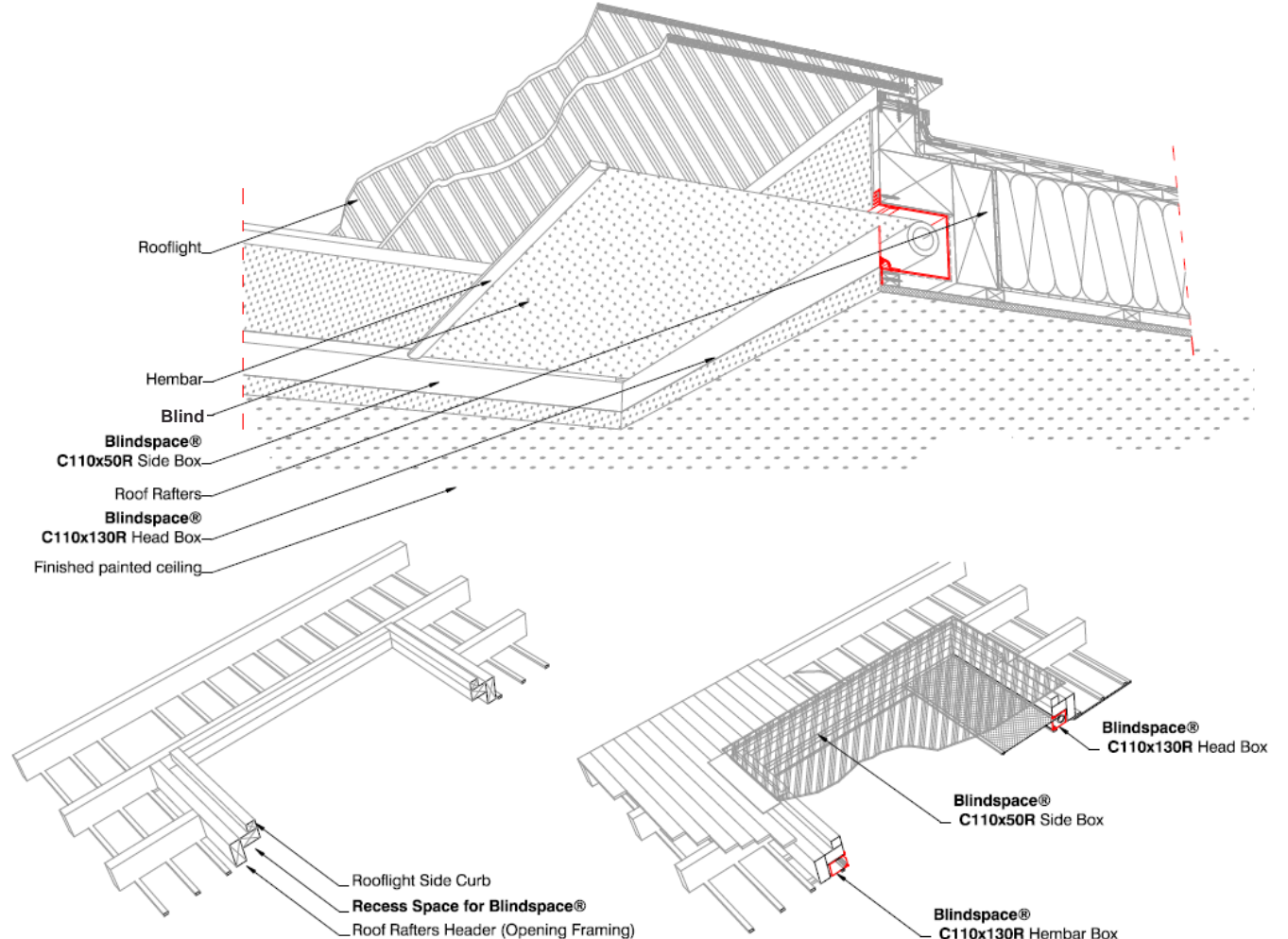
Blindspace® solutions to conceal blinds can be designed for and installed in windows, doors, gables and skylights.

Installations in skylights can be done in several different ways. Some prefer to get the blind as close to the skylight window as possible (recommended) whereas others want to have the blind as close to the inner ceiling as possible.

Blindspace® boxes can be installed under the load bearing structure or within the load bearing structure, shown in the following example drawings.

Note that the architectural details are shown for reference only and might not show proper solution for a specific building application. The intent with the drawings are to show possible placements of Blindspace® boxes. Skylight windows must be drawn according to specific building section and skylight window provider.

It is important to fix the box on both sides to produce a seamless appearance after painting.



Sample Drawings

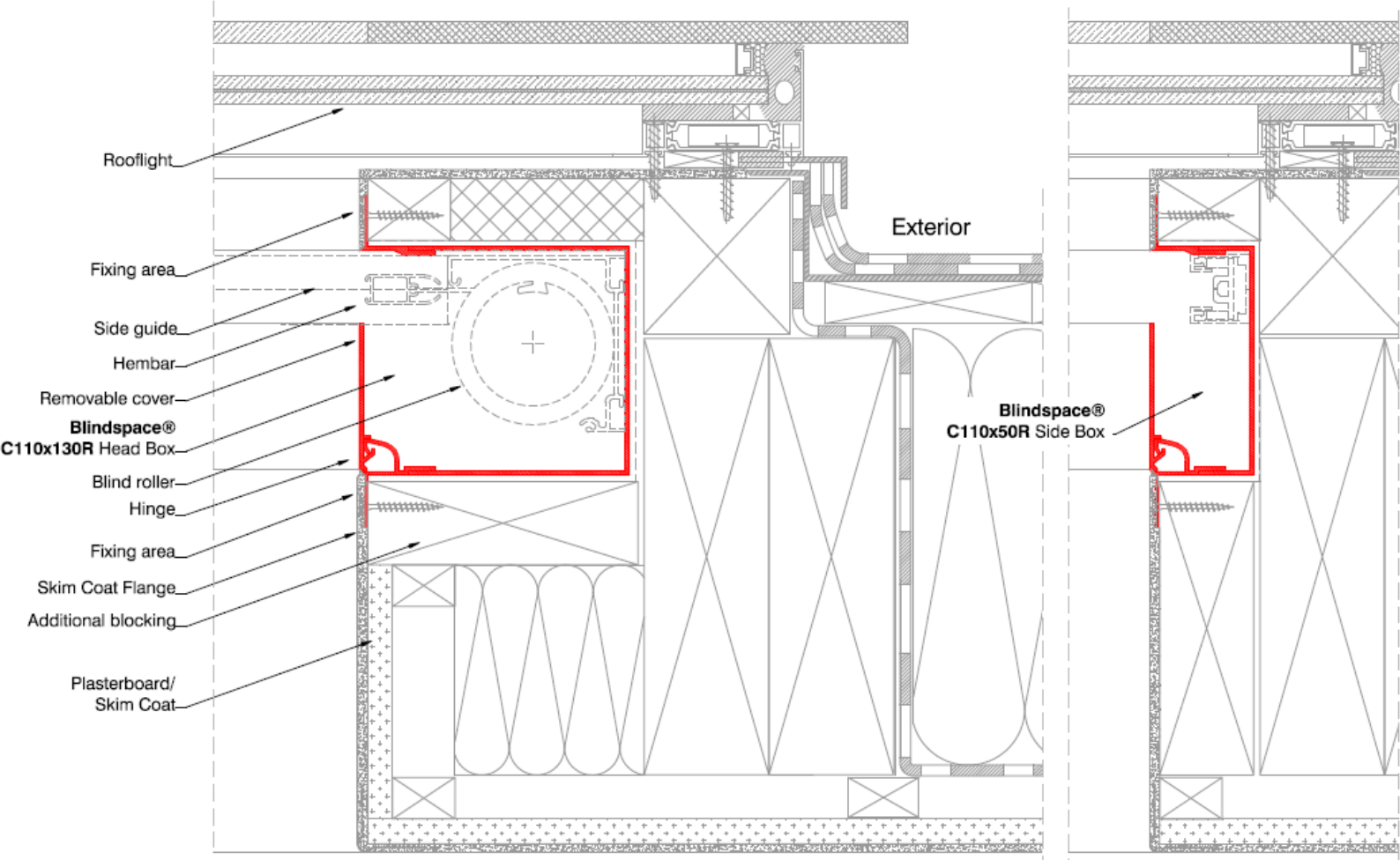
Example: Blindspace C110x130R

Custom Blindspace box installed within the skylight support studs, with the blind gap towards the window and with skim coat flanges on both sides.

When installed within the skylight opening area, the Blindspace box can be installed much closer to the glass. The glass is often masked on the sides to not show the frame from above.

When installing Blindspace boxes with the gap towards the window, less air is heated up and dirt and flies can fall off the roller when retracted.

Plaster should be feathered over flanges to produce seamless appearance after painting



Product	Blindspace C110x130R
Installation	Ceiling installation with screws through skim coat flanges and box.
Blind Gap	Towards the window.

Example: Blindspace C110x130R

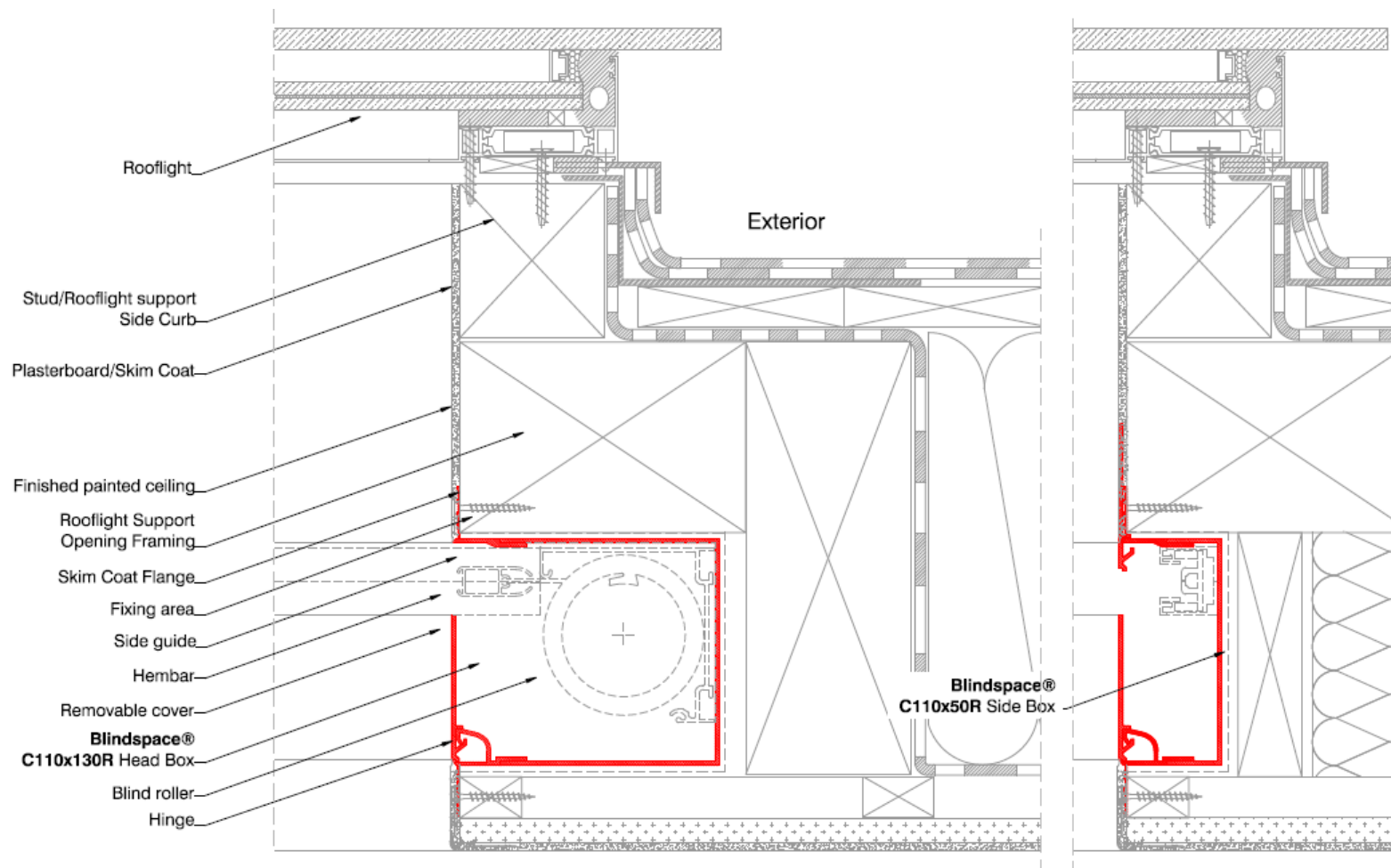
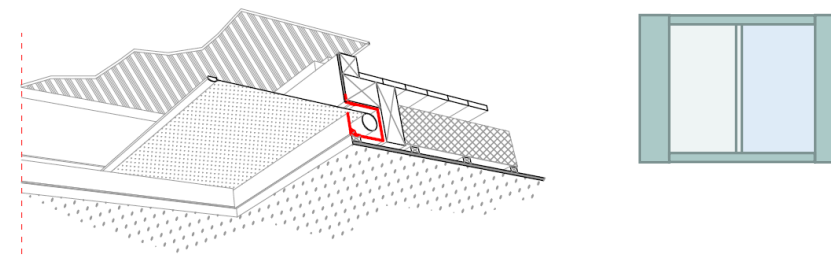
Custom Blindspace box installed below the skylight support studs, with the blind gap towards the window and with skim coat flanges on both sides.

When installing the box below load bearing studs it is important that the Blindspace boxes are not bearing any load.

When installing Blindspace boxes with the gap towards the window, less air is heated up and dirt and flies can fall off the roller when retracted.

Plaster should be feathered over flanges to produce seamless appearance after painting.

Product	Blindspace C110x130R
Installation	Ceiling installation with screws through skim coat flanges and box.
Blind Gap	Towards the window.

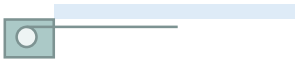


Multiple Configuration Opportunities

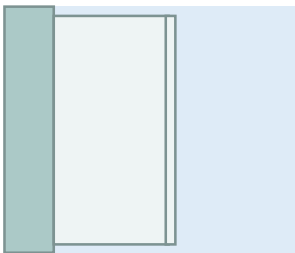
Blindspace® for skylights

SKYLIGHT HEADBOX

Side view



Top view

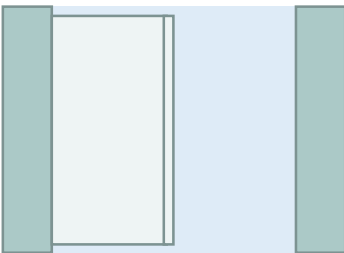


SKYLIGHT HEADBOX + HEMBAR BOX

Side view

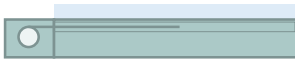


Top view

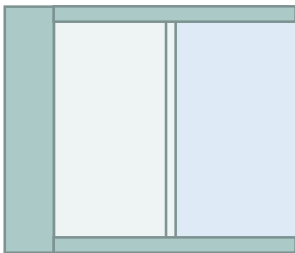


SKYLIGHT HEADBOX + SIDE BOXES

Side view



Top view

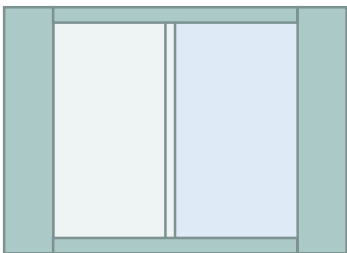


Most Popular
SKYLIGHT FRAME

Side view

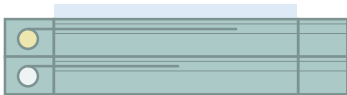


Top view

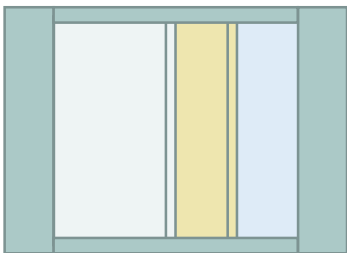


DUAL SKYLIGHT FRAMES

Side view

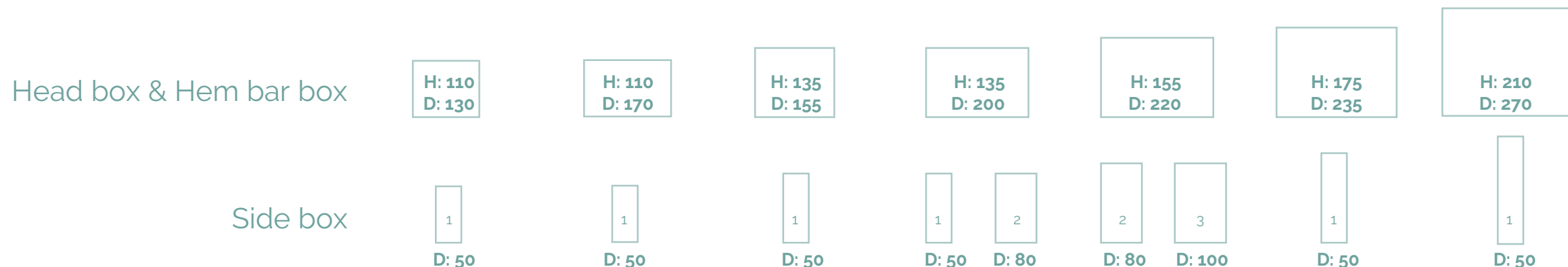


Top view



Standard Sizes & Bespoke Solutions

Blindspace® for **skylights** – Size of windows and boxes



SHY ZIP Roller Blind ¹	W: 1900 L: 2900 Max m²: 8		W: 1900 L: 3200 Max m²: 8	W: 1900 L: 4000 Max m²: 14			
SHY ZIP Roller Blind ¹ (Visible wires)	W: 2900 L: 2900 Max m²: 8	W: 3900 L: 2800 Max m²: 8	W: 2900 L: 3200 Max m²: 8	W: 3900 L: 4000 Max m²: 14		W: 4900 L: 5930 Max m²: 30	W: 6400 L: 19460 Max m²: 50
Guthrie Douglas Tess 660/660L ²				W: 2800 L: 2700	W: 2800 L: 4100		
James Robertshaw ZIP ³					W: 3200 L: 4500		
Honeycomb Duette® Blind (Visible wires)	W: 2100 L: 2200	W: 2100 L: 3700					
French Pinoleum Blind (Visible wires)			W: 2000 L: 1700		W: 2000 L: 3600		

Size of window is calculated from maximum blind size minus box depths: a blind with maximum width 4000mm using 50mm deep side boxes can cover a 3900mm wide window. Guthrie Douglas Tess 660/660L do not require hem bar boxes to conceal mechanism, however it is most often used anyway to conceal hem bar.

ABOUT BLINDSPACE

Blindspace is an innovation-driven company founded in Sweden at the historic cotton mill Nääs Fabriker in 2016.

Our mission is to provide more people with beautiful, bright and energy-efficient places in which to live, work, and play.

Being the preferred choice among architects, contractors and shading specialists, to conceal blinds in any window.

Please visit www.blindspace.com for inspiring images and videos and www.blindspace.com/resources-to-conceal-blinds for CAD drawings, size charts, configurations, installation instructions and to request samples,

Contact us for more information!



www.blindspace.com
info@blindspace.com

Join us! →



BL'NDSPACE®